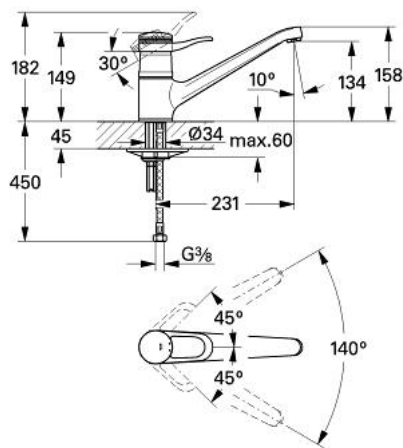


33 861 H00 EUROPLUS KEUKENMENGKRAAN



PRODUCTOMSCHRIJVING

- Kleur: mocca
- GROHE SilkMove 46 mm kardoos met keramische schijven
- instelbare doorstroombegrenzer
- instelbare minimale hoeveelheid ca. 2,5 l/min
- draaibare gegoten uitloop
- met mousseur
- flexibele aansluitslangen
- snelmontage systeem

This diagram shows an exploded view of a mechanical assembly. The components are numbered as follows: 1.1, 1, 2, 2.1, 3, 4, 4.1, 5, 6, 6.1, 7, and 8. The assembly is shown in a vertical orientation, with components 1 through 7 forming the main body and component 8 being a separate sub-assembly. Component 1 is a large, curved, shell-like part. Component 2 is a cylindrical part with internal features. Component 3 is a small, cylindrical part. Component 4 is a long, thin, curved part. Component 5 is a small, cylindrical part. Component 6 is a large, cylindrical part with internal features. Component 7 is a small, cylindrical part. Component 8 is a sub-assembly consisting of a cylindrical part and a small, cylindrical part.

1: Greep (Bestel-nr 46129H00)

1.1: Afdekkapje (Bestel-nr 46130H00)

2: Kardoes (Bestel-nr 46048000)

2.1: Dichtingsset (Bestel-nr 46209000)

3: Stofkap (Bestel-nr 01734H00)

4: Mousseur (Bestel-nr 13929H00)

4.1: Binnenwerk voor 13929 (Bestel-nr 45002000)

5: Dichtingsset (Bestel-nr 46077EE0)

6: Kraanmontageset (Bestel-nr 46078000)

6.1: Stabilisatieplaat (Bestel-nr 05334000)

7: Flexibele aansluitslang, 300 mm (Bestel-nr 45120000)*

*Speciale accessoires